



ChromoPlex™ 1 Dual Detection for BOND  
**FULLY AUTOMATED PARALLEL DUAL  
STAINING DETECTION SYSTEM**

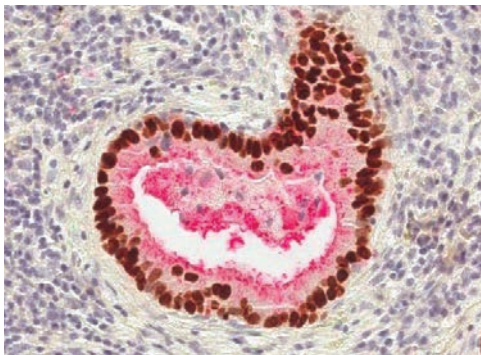
View multiple antibodies on a single slide to deliver a comprehensive clinical result.

# Multiply Your Capabilities

When tissue is limited and a diagnosis is required, the most effective use of tissue sections is imperative. With ChromoPlex 1 Dual Detection for BOND, you can view multiple antibodies using two distinctive chromogens on a single slide, to give you a faster, more comprehensive result for clinical assessment.

*"The ease of interpretation was excellent."*

Dr. J M. Cates MD, Ph.D - Consultant Pathologist. Vanderbilt University Medical Center, USA.



## Make comparative diagnostics easier

Clear color differentiation of the red and brown chromogens allow for the respective identification of the rabbit and mouse antibodies. The use of dual detection to see multiple markers can give more insight into diagnosis, particularly when tissue is limited.



## Lead the way in diagnostic efficiency

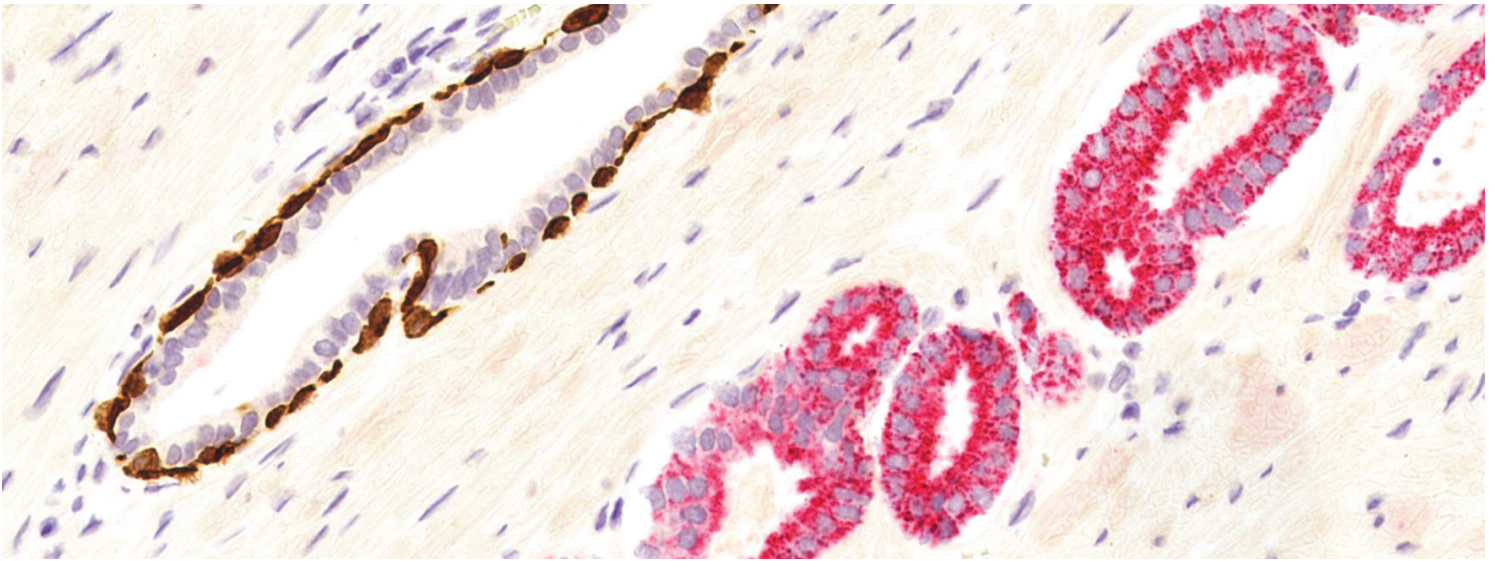
Using ChromoPlex 1 Dual Detection for BOND, enables you to develop your own disease specific antibody cocktails as clinical needs dictate.



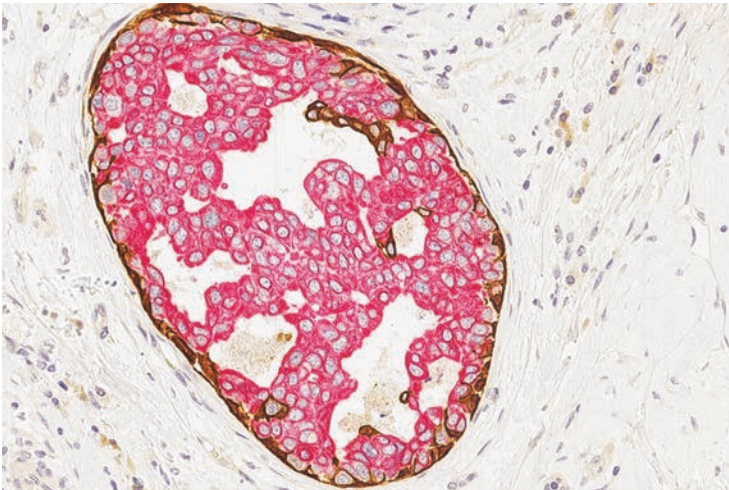
## Improve the opportunity for same day diagnosis

Expedite patient care through same day diagnosis with ChromoPlex 1 Dual Detection for BOND. The significant reduction in Turn-Around-Time allows you to perform dual staining within a standard run time.

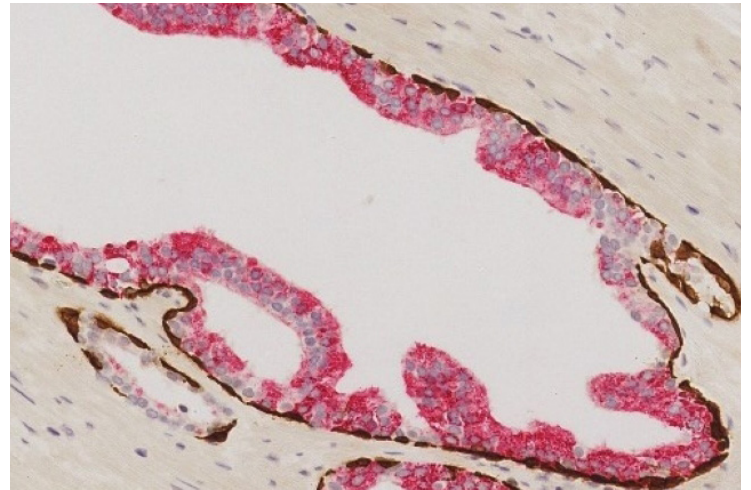




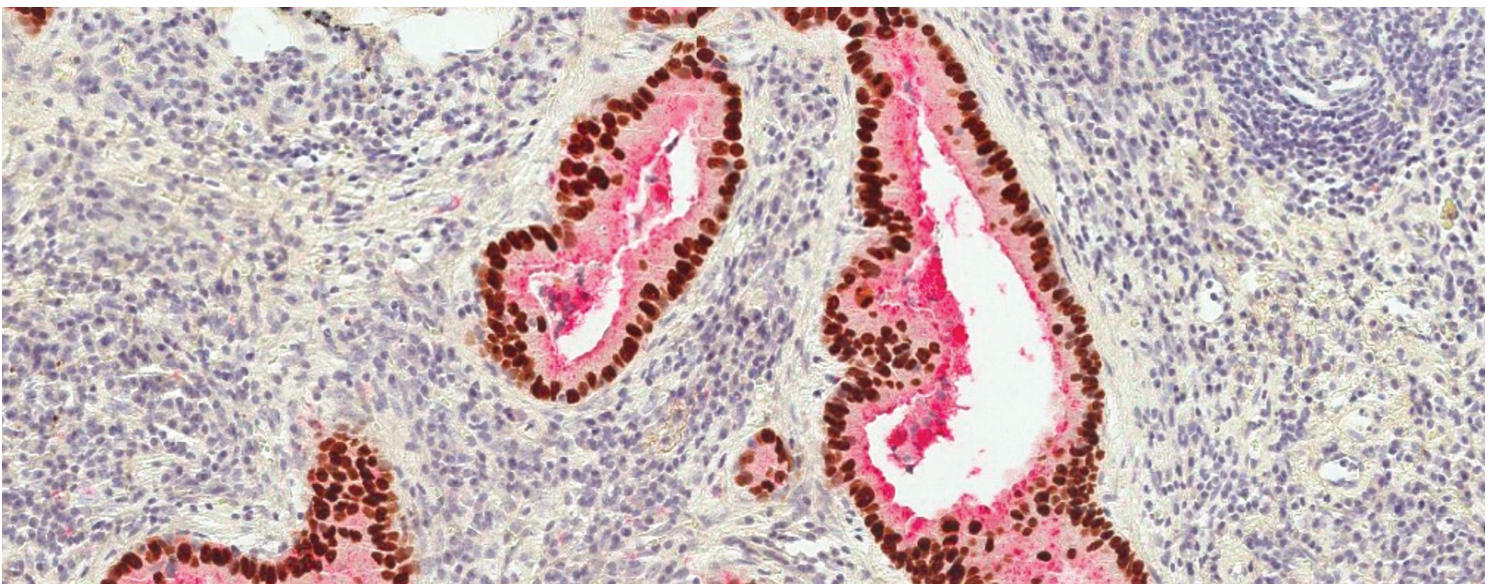
Sensitive and specific staining of cells in the basal cell layer with CK5, CK14 and p63. Excellent staining intensity of malignant cells with p540S (AMACR) antibody. Prostate biopsy stained with Biocare Medical PIN-4® (Prostate Marker Cocktail). CK5, CK14 & p63 mouse antibodies stain brown and p540S rabbit antibody stains red.



Excellent staining intensity, brown DAB detecting myoepithelial cells and red AP detecting luminal cells in a breast biopsy.



Crisp, clean staining of a prostate biopsy brown DAB detecting the basal cell layer and red AP detecting the malignant cells.



Lung adenocarcinoma with strong, specific nuclear DAB staining of TTF-1 cells together with clear specific cytoplasmic RED staining of Napsin A. Lung biopsy stained with user validated lung cocktail. TTF-1 mouse antibody stains brown and Napsin A rabbit antibody stains red.



# Maximize Workflow Efficiency

With the ability to now fully automate parallel dual chromogen staining using ChromoPlex 1 Dual Detection for BOND, it's easier to ensure same day delivery of complex IHC staining. Uninterrupted processing and total automation frees up staff, allowing more effective resource optimization. Available in two test sizes to suit your workflow needs.

*"Dual staining with ChromoPlex is just as easy to perform as single staining."*

Mr. A Troutman BS, HT (ASCP) QIHC - IHC Supervisor. Vanderbilt University Medical Center, USA.



## Save time, save costs

The dramatic savings in Turn-Around-Time with parallel dual staining, helps increase your work-flow efficiency and introduces flexibility.



## One step, two results

ChromoPlex 1 Dual Detection for BOND produces slides with a Turn-Around-Time that fits right into standard run time. The timing works well with established workflow and fits with daily routine.



## Minimize repeats, maximize efficiency

Delicate sections of patient's tissue are stained with utmost care. The Leica BOND system and the compact polymer detection takes advantage of the benefits afforded by the systems giving you excellent tissue preservation.

## Faster than all other advanced staining platforms

*"ChromoPlex on BOND performs noticeably faster, plain and simple."*

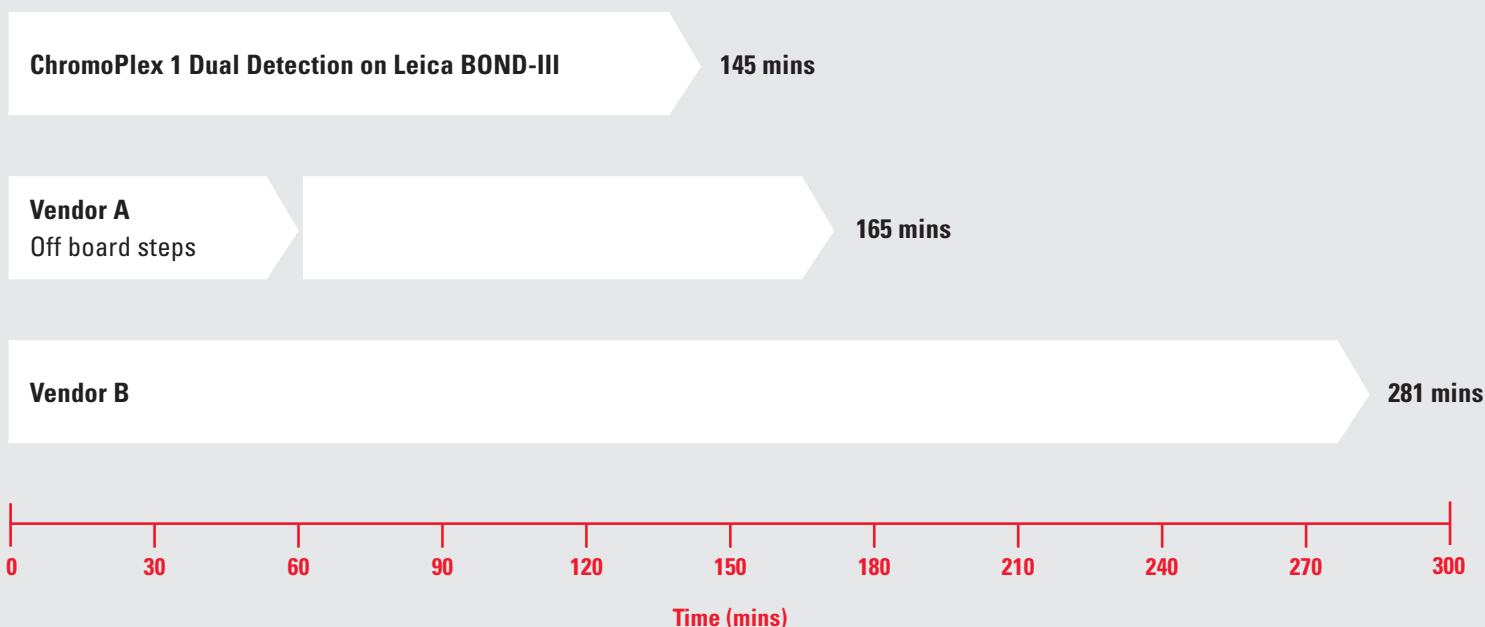
## Excellent staining quality

*"The slides stained with the Leica parallel dual detection kit, were cleaner with very little background staining observed."*

Mr. Y Jimenez Cortez, CLT - Supervisor-IHC Lab. Columbia University Medical Center, USA.

**ChromoPlex 1 Dual Detection for BOND consistently gives the fastest Turn-Around-Time for dual color chromogen staining\*.**

Independent evaluation performed at Columbia University Medical Center, New York, USA.



\* 5 cases of prostate cancer from prostatectomy, stained using Biocare PIN-4 (Prostate Marker Cocktail)

# Ensure Consistency

With the already well established Compact Polymer technology, ChromoPlex 1 Dual Detection for BOND delivers the quality and performance that you associate with Novocastra – results that can be relied upon consistently.

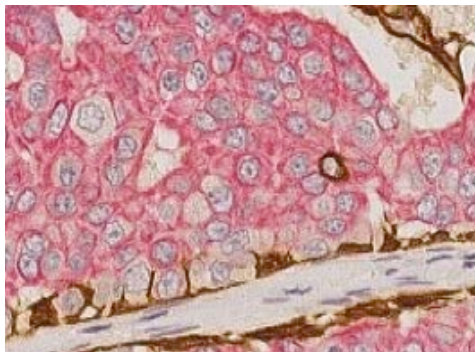
*"Dual staining obtained using the ChromoPlex 1 is attractive, crisp and consistent; ideal when assessing challenging prostatic biopsies."*

Dr. G Hulman MD FRCPath - Consultant Histopathologist. Nottingham University Hospitals NHS Trust, UK.



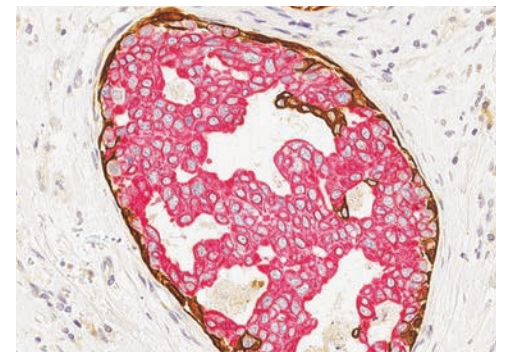
**Two chromogens,  
one detection system**

Visualize different epitopes with two different colored chromogens on the same slide. ChromoPlex 1 Dual Detection for BOND adds the compact presentation of a single reagent kit with the speed of parallel dual staining.



**Intense staining,  
clean background**

Intense high resolution staining produced with the Novocastra compact polymer detection. The excellent contrast between the Fast Red and DAB chromogens allows for easy differentiation.



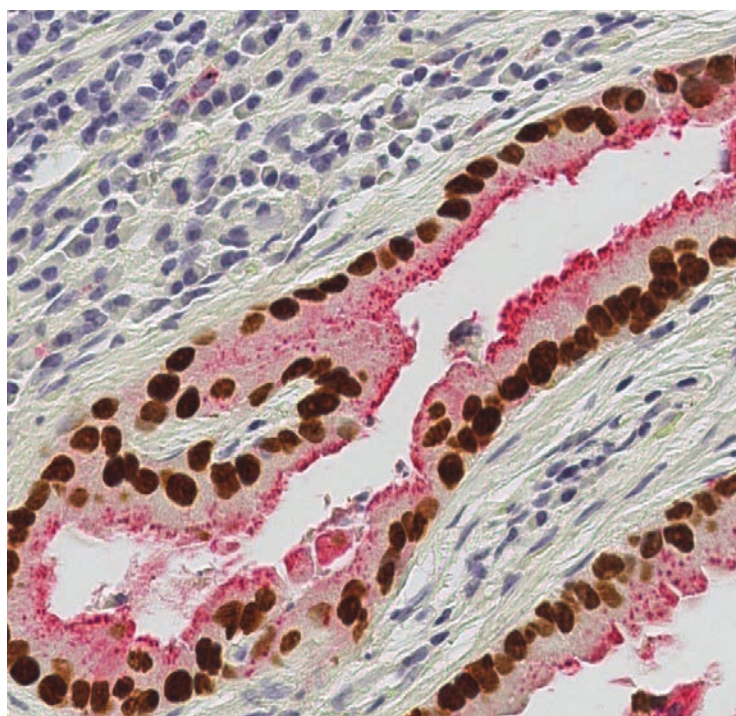
**Multiple antibodies,  
single slide**

Reduce the possibility of inherent unclear double staining associated with sequential reagent application. The parallel reagent technology of ChromoPlex 1 Dual Detection for BOND ensures uniform reagent application and clearly differentiated antigen staining.

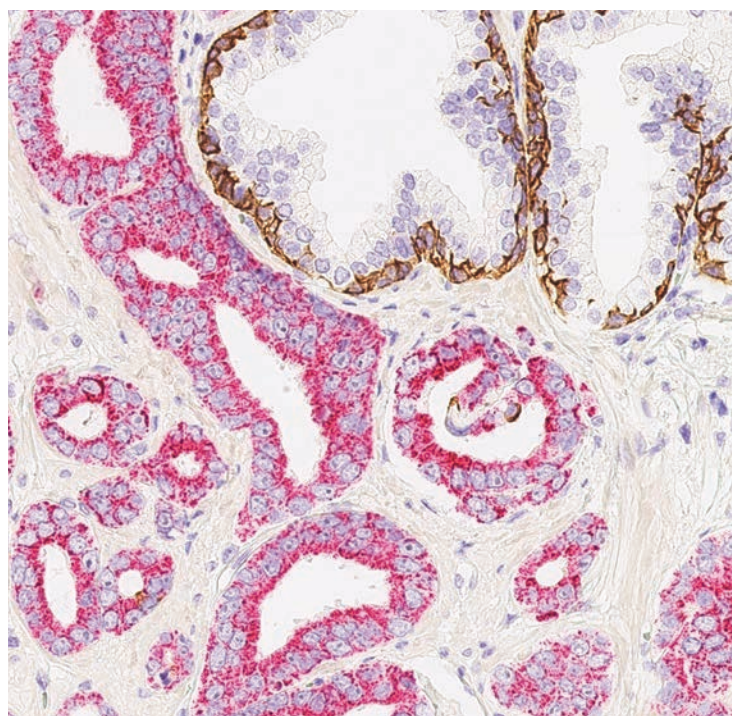


## Comparison of staining platforms offering parallel dual color

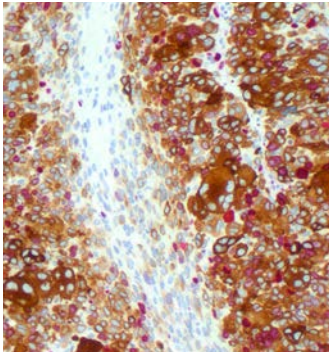
	<b>ChromoPlex 1 Dual Detection for BOND</b>	<b>Vendor A</b>	<b>Vendor C</b>
Automation	✓ Fully Automated	Semi-automated, manual preparation required	Semi-automated, manual preparation required
Staining	Parallel	Parallel	Parallel
Reagents	Ready to use	Ready to use	Equilibrated to room temperature prior to use
Protocol	Counterstain supplied	Counterstain supplied, room temperature storage required	No counterstain supplied
Dewax	✓ On board (fully automated)	Off board	Off board
Hydration	✓ On board (fully automated)	Off board	Off board
Epitope Retrieval	✓ On board (fully automated)	Off board	Off board
DAB Chromogen	Ready to use reagents	Ready to use reagents	Reconstitution required
Red Chromogen	Ready to use reagents	Ready to use reagents	Reconstitution required
Dehydration, clearing and mounting	✓ Can be performed immediately after completion of run	Air-drying slides 60°C for 15-30 minutes or rapid dehydration in alcohol	Air-drying slides at room temperature or 60°C for 1 hour



User Validated Lung Marker Cocktail - TTF-1 mouse antibody stains brown and Napsin A rabbit antibody stains red.



User validated Prostate Marker Cocktail –HMW CK mouse antibody stains brown and p540S rabbit antibody stains red.



**TOTAL REAGENT SOLUTIONS**

**Leica BOND Detection**

State of the art biotin-free Compact Polymer Detection. Small multifunctional linkers enhance tissue penetration, producing unsurpassed sensitivity.

- DS9800 BOND Polymer Refine Detection 200 tests/kit
- DS9390 BOND Polymer Refine Red Detection 100 tests/kit
- DS9477 ChromoPlex 1 Dual Detection for BOND 100 tests/kit
- DS9665 ChromoPlex 1 Dual Detection for BOND 50 tests/kit



For further information regarding fully automated dual staining with ChromoPlex 1 Dual Detection for BOND visit our website at [www.LeicaBiosystems.com](http://www.LeicaBiosystems.com)

Customer testimonials are available to read on the website.

- Vanderbilt University Hospital, Histopathology Department, Testimonial.
- Columbia University Medical Center, New York Testimonial.

All digital staining images are captured with the Leica SCN400 Slide Scanner

**LEICA BIOSYSTEMS**

Leica Biosystems is a global leader in workflow solutions bringing histopathology laboratories and researchers the highest quality, most comprehensive product range in anatomical pathology. With complete histology systems featuring innovative automation, Novocastra™ reagents and Surgipath® consumables, Leica Biosystems offers the ideal product for each histology step and high-productivity workflow solutions for the entire laboratory.

Leica Biosystems – an international company with a strong network of worldwide customer services:

**North America Sales and Customer Support**

North America 800 248 0123

**Asia/Pacific Sales and Customer Support**

Australia	1800 625 286
China	+85 2 2564 6699
Japan	+81 3 5421 2804
South Korea	+82 2 514 65 43
New Zealand	0800 400 589
Singapore	+65 6779 7823

**Europe Sales and Customer Support**

For detailed contact information about European sales offices or distributors please visit our website.

Leica Biosystems brings together products, quality and support. Offering a complete solution that helps you advance workflows, enhance diagnostic clarity and deliver what really matters – better patient care.

