

PRODUCT INFORMATION

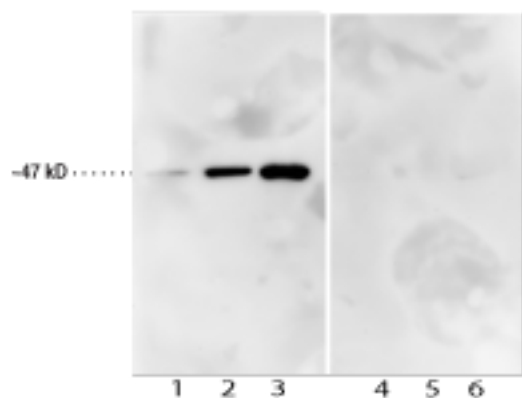
Citrullinated α -Enolase Monoclonal Antibody

Item No. 23000

Overview and Properties

Contents:	This vial contains protein G purified IgG at 1 mg/ml
Synonyms:	Enolase-1
Immunogen:	Recombinant citrullinated α enolase protein
Cross Reactivity:	(-) unmodified α enolase
Species Reactivity:	(+) Human
Uniprot No.:	PO6733
Form:	Liquid
Storage:	-20°C (as supplied)
Stability:	≥ 1 year
Storage Buffer:	PBS, pH 7.2, 50% glycerol with 0.1% BSA and 0.02% sodium azide
Clone:	8D3
Host:	Mouse
Isotype:	IgG1
Applications:	Western blot (WB) and ELISA; the recommended starting dilution for WB and ELISA is 1:1000. Other applications were not tested, therefore optimal working concentration/dilution should be determined empirically.

Image(s)



Lanes:
 1 – Citrullinated α Enolase (20ng)
 2 – Citrullinated α Enolase (100ng)
 3 – Citrullinated α Enolase (400ng)
 4 – α Enolase (20ng)
 5 – α Enolase (100ng)
 6 – α Enolase (400ng)

Description

WARNING
 THIS PRODUCT IS FOR RESEARCH ONLY - NOT FOR HUMAN OR VETERINARY DIAGNOSTIC OR THERAPEUTIC USE.

SAFETY DATA
 This material should be considered hazardous until further information becomes available. Do not ingest, inhale, get in eyes, on skin, or on clothing. Wash thoroughly after handling. Before use, the user must review the [complete](#) Safety Data Sheet, which has been sent via email to your institution.

WARRANTY AND LIMITATION OF REMEDY
 Buyer agrees to purchase the material subject to Cayman's Terms and Conditions. Complete Terms and Conditions including Warranty and Limitation of Liability information can be found on our website.

Copyright Cayman Chemical Company, 08/16/2017

CAYMAN CHEMICAL

1180 EAST ELLSWORTH RD
 ANN ARBOR, MI 48108 · USA

PHONE: [800] 364-9897

[734] 971-3335

FAX: [734] 971-3640

CUSTSERV@CAYMANCHEM.COM

WWW.CAYMANCHEM.COM

PRODUCT INFORMATION



α -Enolase is an enzyme with roles in glycolysis, hypoxia and the allergic response. α -Enolase can be citrullinated by peptidyl arginine deiminases (PADs). Citrullinated α -enolase has been described in the synovial fluid of rheumatoid arthritis (RA) patients.¹ The presence of citrullinated proteins *in vivo* can lead to the production of anti-citrullinated protein antibodies (ACPAs). ACPAs can cause an autoimmune response, which may lead to inflammation and the eventual onset of RA and other autoimmune diseases.^{1,2} The predicated size of human α -enolase is 47.2 kDa and Cayman's citrullinated α -enolase monoclonal antibody (clone 8D3) detects a band at ~47kDa by western blot in cell lysates.

References

1. Kinloch, A., Lundberg, K., Wait, R., *et al.* Synovial fluid is a site of citrullination of autoantigens in inflammatory arthritis. *Arthritis Rheum.* **58(8)**, 2287-2295 (2008).
2. Kuhn, K.A., Kulik, L., Tomooka, B., *et al.* Antibodies against citrullinated proteins enhance tissue injury in experimental autoimmune arthritis. *J.Clin.Invest.* **116(4)**, 961-973 (2006).

CAYMAN CHEMICAL
1180 EAST ELLSWORTH RD
ANN ARBOR, MI 48108 · USA
PHONE: [800] 364-9897
[734] 971-3335
FAX: [734] 971-3640
CUSTSERV@CAYMANCHEM.COM
WWW.CAYMANCHEM.COM